

MR-GLASS

Doors & Windows Manufacturing, LLC.



We are a company with 30 years of combined experience. Through such experience, we've learned that the best opportunity for growth, as a leading company, lies in the use of first-rate products, superior service, and customer satisfaction. Our goal consists of responding and providing service in a timely and courteous manner.

We take pride in the distinct quality of our craftsmanship and use only the best materials in the fabrication of our products. Our commitment is to our clients, products, and services. Through meticulous work and first-rate quality products, we manage to ensure our customers of our standing as an insuperable manufacturing company.

MR-GLASS Doors & Windows Manufacturing, LLC.

Impact Doors / Non-Impact Doors / Impact Storefronts / Non-Impact Storefronts / Impact Curtain Wall System / Glass Railing / Single Hung Windows / Horizontal Rollers / Sliding Glass Doors / French Doors



sales@mrglasswindows.com • www.mrglasswindows.com
8120 NW 84th Street, Medley, FL 33166 • Ph: 305.470.8284 Fax: 305.470.8285

SERIES MG-200

Impact Resistant Single Hung



Description

- Impact resistant single hung windows
- Frame profile is 2 7/8
- Design for residential, midrise and highrise applications
- Design loads (+80/-140 PSF)

Frame

- White, Bronze, Clear Anodized and Kynar finish
- Woodgrain Colors Available

Glass

- 7/16
- 5/16
- laminated & insulated
- low-e coatings

Benefits

- No screws at the bottom up to +/- 80 PSF
- Friendly installation

Features

- Maximum size 53 1/8x96"
- Equal Lites
- Proview

Florida Product Approval LMI FA: FL # 20352.1 SMI FL # 20352.2

CAD Drawings available online at www.MrGlassWindows.com



sales@mrglasswindows.com • www.mrglasswindows.com
8120 NW 84th Street, Medley, FL 33166 • Ph: 305.470.8284 Fax: 305.470.8285

SERIES MG-275

Non-Impact Commercial Door



Description

- Aluminum profile is 1 3/4" x 4 1/2", door leaf profile is 1 3/4"
- Stainless steel assembly screws to avoid future corrosion
- Design loads +65.00, -75.00 PSF for single door or double door
- Maximum size for single door is 39 5/8" x 97 5/8", transom up to 120"
- Maximum size for double door is 75 5/8" x 97 5/8", transom up to 120"

Frame

- Clear anodized, bronze anodized and white.
- Custom finish available upon request.

Glass

- 3/16" tempered glass

Features

- Corners are reinforced with aluminum brackets
- Covered anchors
- Variety of accessories including three point lock, concealed rod panic devices, push-pull tubular handles, overhead concealed or surface mounted closers, pivots and butt hinges
- Tested with panic hardware models from Regent and Jackson
- Out swing motion
- ADA threshold

Benefits

- Decrease installation time
- Compatible with Series MG-4500 Non-Impact Storefront System
- Anchors are not visible, improving aesthetics



Dade County Notice of Acceptance (N.O.A) #16-1116.05

CAD Drawings available online at www.MrGlassWindows.com



sales@mrglasswindows.com • www.mrglasswindows.com
8120 NW 84th Street, Medley, FL 33166 • Ph: 305.470.8284 Fax: 305.470.8285

SERIES MG-300

Impact Resistant Horizontal Slider



Description

- Oversided horizontal slider window
- Configuration XO/OX - 74" x 74" and 96" x 63"
- Unequal panels XO/OX - 89 3/4" x 74"
- 3 panels XOX - 127 5/8" x 74"
- Design loads (+90/-140 PSF)

Frame

- White, Bronze, Clear Anodized and Kynar finish

Glass

- 7/16
- 5/16
- laminated & insulated
- low-e coatings

Benefits

Tested with different glass composition to accommodate residential, mid and highrise projects.



Florida Product Approval LMI FL # 20359.1 SMI FL # 20359.2

CAD Drawings available online at www.MrGlassWindows.com



sales@mrglasswindows.com • www.mrglasswindows.com
8120 NW 84th Street, Medley, FL 33166 • Ph: 305.470.8284 Fax: 305.470.8285

SERIES MG-400

Fixed (Picture Window)



Description

- Impact resistance (LMI & SMI)
- Design loads DP=+/- 100 PSF
- Frame depth 2 15/16"
- Architectural shapes available

Glass Type

- 7/16" laminated w/ 0.09 PVB/SGP
- 1-3/16" glass insulated laminated
- High performance low-e coatings
- PVB or SGP as interlayer

Standard Finishes

- Bronze
- White
- Silver

Features

- Slim design that matches with the single hung and horizontal sliding window
- Flush adaptor for flush installation into concrete
- Flange design for wood buck installation
- Hidden Anchors
- Extensive shapes or archs and figures
- Possible to match infinite picture windows through aluminum mullion

Custom Finishes

- Kynar finish
- Wood-like finishes



Florida Product Approval LMI FA: FL #

SMI FL #

CAD Drawings available online at www.MrGlassWindows.com



sales@mrglasswindows.com • www.mrglasswindows.com

8120 NW 84th Street, Medley, FL 33166 • Ph: 305.470.8284 Fax: 305.470.8285

SERIES MG-500

Impact Resistant Commercial Door



Description

- Aluminum profile is 1 3/4" x 5", door leaf profile is 2 1/4"
- Stainless steel assembly screws to avoid future corrosion
- Design loads +80/-120 PSF for single door
- Design loads +/- 90 PSF for double door
- Door leaf automatically glazed at factory to avoid water leaks
- Maximum size for single door is 47" x 110 1/2", transom up to 120"
- Maximum size for double door is 89" x 110 1/2", transom up to 120"

Frame

- Clear anodized, bronze, white and wood grain
- Custom finish available upon request

Glass

- 9/16" laminated or 1-1/8" insulated laminated, PVB or SGP interlayers
- Low-e coatings

Features

- Corners are reinforced with heavy duty aluminum brackets and 8 welded points
- Variety of accessories including three point lock, concealed rod panic devices, push-pull tubular handles, overhead concealed or surface mounted closers and butt hinges
- Tested with the heaviest panic hardware models from Jackson, Adams Rite and Dor - O - Matic
- ADA, saddle and high threshold
- Single door is rated for water infiltration
- Covered anchors

Benefits

- Designed for heavy duty traffic
- Decreased installation time
- Ensured glazing quality
- Compatible with Series MG-5000 Impact Storefront System
- Anchors are not visible, allowing for modern improving aesthetics
- Enhanced durability with a 2 1/4" thick profile



Florida Product Approval FL # 27001.1

CAD Drawings available online at www.MrGlassWindows.com



sales@mrglasswindows.com • www.mrglasswindows.com
8120 NW 84th Street, Medley, FL 33166 • Ph: 305.470.8284 Fax: 305.470.8285

SERIES MG-1000

Impact Resistant Sliding Glass Doors



Description

- Aluminum profile is 2 5/8" x 5 5/8" two track, door panel profile is 2 1/4 x 4"
- Stainless steel assembly screws to avoid future corrosion
- Design loads +120.00, -140.00 PSF large and small missile
- Door panel use wet glazing applied thru a computerized glazing machine to avoid water leaks
- Maximum size is 192" x 120"
- Configurations XO - OX - XX - XOX - OXO - OXXO

Frame

- White, Bronze, Clear Anodized and Kynar finish

Features

- 45° corner assembly
- Low sill raiser (2 5/8") up to +120 psf
- Anchor less jamb option up to 108"

Glass

- 9/16" laminated or 1 3/16" insulated laminated
- low-e coatings

Benefits

- Designed for high rise buildings
- Anchor are not visible, allowing for modern improving aesthetics

Florida Product Approval FL #19092.1 LMI - FL #19092.2 SMI

CAD Drawings available online at www.MrGlassWindows.com



sales@mrglasswindows.com • www.mrglasswindows.com
8120 NW 84th Street, Medley, FL 33166 • Ph: 305.470.8284 Fax: 305.470.8285

SERIES MG-2530

Glass Railing System



Description

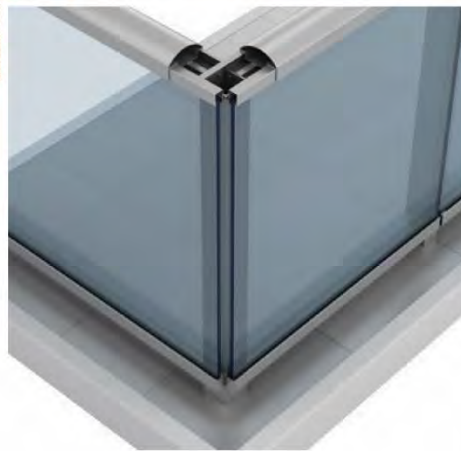
- Aluminum Glass Railing
- Design loads +/-110 PSF

Frame

- Kynar finish, white or arcadia silver available
- Custom color available upon request

Glass

- 7/16" laminated glass
- Outside butt joint glazing



Dade County Notice of Acceptance (N.O.A) #14-1022.02

CAD Drawings available online at www.MrGlassWindows.com



sales@mrglasswindows.com • www.mrglasswindows.com
8120 NW 84th Street, Medley, FL 33166 • Ph: 305.470.8284 Fax: 305.470.8285

SERIES MG-4500

Non-Impact Storefront System



Description

- Aluminum profile is 1 3/4" x 4 1/2"
- Stainless steel assembly screws to avoid future corrosion
- Design loads +/- 100 PSF

Frame

- Clear anodized, bronze anodized and white in stock
- Custom finish available upon request

Glass

- 1/4" tempered glass

Features

- Pre-assembled
- Covered anchors

Benefits

- Decreased installation time
- Compatible with Series MG-275 Non-Impact Door
- Anchors are not visible, allowing for modern aesthetics
- Design flexibility
- Excellent for interior office divisions



Dade County Notice of Acceptance (N.O.A) #16-116.04

CAD Drawings available online at www.MrGlassWindows.com



sales@mrglasswindows.com • www.mrglasswindows.com
8120 NW 84th Street, Medley, FL 33166 • Ph: 305.470.8284 Fax: 305.470.8285

SERIES MG-5000

Impact Resistant Storefront Wall System



Description

- Aluminum profile is 1 3/4" x 5"
- Stainless steel assembly screws to avoid future corrosion
- No anchors required on jambs, just top and bottom
- Design loads +80/-130 PSF large and small missile
- Storefront panels are automatically factory glazed to avoid water leaks
- Maximum Size for one lite 84" x 185"

Frame

- Clear anodized, bronze, White and wood grain
- Custom finish on request

Glass

- 9/16" laminated, PVB or SGP interlayers available
- Low-e coatings

Features

- Pre-assembled and pre-glazed
- Arch shapes available
- Covered anchors

Benefits

- Decreased installation time
- Ensured glazing quality
- Compatible with Series MG-500 Impact Door
- Anchors are not visible, allowing for modern aesthetics
- Design flexibility



Florida Product Approval FL # 27000.1

CAD Drawings available online at www.MrGlassWindows.com



sales@mrglasswindows.com • www.mrglasswindows.com
8120 NW 84th Street, Medley, FL 33166 • Ph: 305.470.8284 Fax: 305.470.8285

SERIES MG-6000

Impact Resistant Storefront Wall System



Description

- Aluminum profile is 1 3/4" x 5"
- Front glazing
- Stainless steel assembly screws to avoid future corrosion
- No anchors required on jambs, just top and bottom
- Design loads +100/-145 PSF large and small missile
- Storefront panels are automatically factory glazed to avoid water leaks
- Maximum height is 144"
- Wide spans of 60x120" and 48x144"

Frame

- Clear anodized, bronze, white and wood grain
- Custom finish on request

Glass

- 9/16" laminated or 1-5/16" insulated laminated, PVB or SGP interlayers available
- Low-e coatings

Features

- Pre-assembled and pre-glazed
- Covered anchors

Benefits

- Decreased installation time
- Ensured glazing quality
- Anchors are not visible, allowing for modern aesthetics
- Design flexibility



Florida Notice of Acceptance: FA: FL #18411.1

CAD Drawings available online at www.MrGlassWindows.com



sales@mrglasswindows.com • www.mrglasswindows.com
8120 NW 84th Street, Medley, FL 33166 • Ph: 305.470.8284 Fax: 305.470.8285

SERIES MG-7000

Impact Resistant Curtain Wall System



Description

- Aluminum profile is 2 ½" x 7 ¼"
- Stainless steel assembly screws to avoid future corrosion
- Anchoring clips only top and bottom
- Design loads +/- 100 PSF large and small missile
- Infinite height with intermediate anchor 150"

Frame

- Clear anodized, bronze and white available
- Custom finish on request

Glass

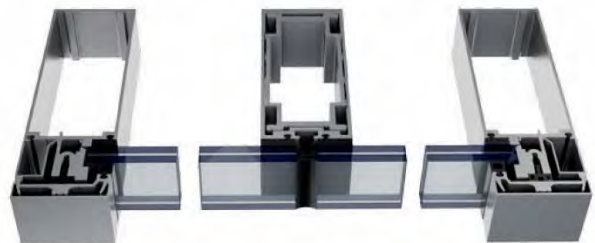
- 9/16" laminated and 1-5/16" insulated laminated, SGP interlayer
- Low-e coatings

Features

- Shear block construction
- Butt joined glass at mullion or with pressure plate

Benefits

- Compatible with Series MG-500 impact door
- Design flexibility



Florida Product Approval FL # 27101.1

CAD Drawings available online at www.MrGlassWindows.com



sales@mrglasswindows.com • www.mrglasswindows.com
8120 NW 84th Street, Medley, FL 33166 • Ph: 305.470.8284 Fax: 305.470.8285

SERIES

Postless Railing for Impact Rated and Non-Impact



Description

- Impact resistance (LMI) railing
- Aluminum Shoe 4: wide
- Design loads DP=+/- 160 PSF (LMI). DP=+/- 60 for non-impact zone
- Glass type: Laminated 3/8" = 0.06 SGP + 3/8"
- Max height: 44 1/2" In impact zone (HVHZ) or 48" in non-impact zone
- Max. Glass width: 70"
- Stainless steel cladding in different GA and shapes

Glass Type

- 3/4" F.T. laminated composed by: 3/8" FT + 0.06 SGP + 3/8" FT
- Test Report Available

Features

- Top mounted
- Curved glass and shoe available
- Multiple substrates
- Glazing using high strength SIKA two parts resin (LMI Rated) or a combination of CRL's taper lock w/structural silicone (non-impact zone)
- Stainless steel cap

Standard Finishes

- Alum. Shoe in mill finish or alodine w/cladding in stainless steel or painted aluminum
- Railing cap in stainless steel 304 or 316

CAD Drawings available online at www.MrGlassWindows.com



sales@mrglasswindows.com • www.mrglasswindows.com

8120 NW 84th Street, Medley, FL 33166 • Ph: 305.470.8284 Fax: 305.470.8285

SERIES 1100

Multitrack Sliding Glass Door



Description

- Impact resistance (LMI & SMI) up to 6 panels on 3 tracks
- With or without screen
- Design loads DP=+/- 100 PSF
- Frame depth 5 1/4"
- Unanchored jambs
- Maximum dimensions: 288" x 120" or 360" x 96" (FW x FH)

Features

- Very robust door with anchorless jambs
- Panels made of one extrusion mitered cut
- PMO (acetal) wheels on stainless steel housing and bearings tested to 25000 cycles
- 2 5/8" sill height without riser up to +75/-100 PSF
- Hidden drainages for enhanced appearance
- Reinforced astragal above 9'-0"
- Optional raised grid for design freedom

Glass Type

- 9/16" laminated w/ 0.09 PVB/SGP
- 1-5/16" glass insulated laminated
- High performance low-e coatings

Standard Finishes

- Bronze
- White
- Silver

Custom Finishes

- Kynar finish
- Wood-like finishes



Florida Product Approval LMI FA: FL # 25959.1 SMI FL # 25959.2

CAD Drawings available online at www.MrGlassWindows.com



sales@mrglasswindows.com • www.mrglasswindows.com

8120 NW 84th Street, Medley, FL 33166 • Ph: 305.470.8284 Fax: 305.470.8285

SERIES 2000

Curtain Wall



Description

- Toggle glazing system with the sought after 4 sided silicone look
- Impact Resistance (LMI)
- In multiple, twin and single span
- Design loads DP = +/- 100 PSF
- Max. span in multi and twin: 144"
- Max. span in single span: 204"
- MAX. Width: 60"
- As per FBC 2017

Features

- Multiple pre-engineered anchoring systems
- Two part silicone (DC983) application in the shop
- Preglazed frame attached via aluminum clips
- Stick built system
- Mullions allowing a drained system in case of silicone failure
- Gaskets in silicone. Screws in stainless steel

Glass Type

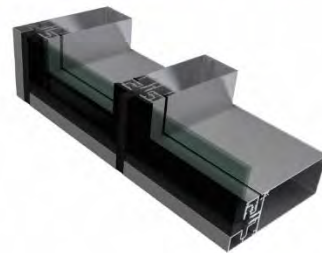
- 9/16" laminated w/0.09 SGP
- 1-5/16" glass insulated laminated w/ 0.09 SGP
- High Performance Low-e coatings

Standard Finishes

- Bronze
- White
- Silver

Custom Finishes

- Kynar Finish



Florida Product Approval LMI FA: FL # 26946 SMI FL # 27401

CAD Drawings available online at www.MrGlassWindows.com



sales@mrglasswindows.com • www.mrglasswindows.com
8120 NW 84th Street, Medley, FL 33166 • Ph: 305.470.8284 Fax: 305.470.8285

SERIES 3000

French Door



Description

- Impact resistance (LMI) single and double door with or without sidelites
- Available configurations: X, XX, OX, OXO, OXXO
- Design loads DP= +/- 80 PSF
- Frame depth 4"
- Maximum dimensions: 156" x 98" (FW x FH)

Features

- Concealed 2 and 3 point lock system
- Can be prepped for industry standard hardware
- 4 hinges per panel for added strength
- Multiple glass lites per panel door (intermediate horizontals) that allow combinations of privacy glass and clear or tinted glass
- Door and added sidelites with matching top and bottom horizontal lines
- Optional raised grid for design freedom

Glass Type

- 7/16" laminated w/ 0.09 PVB
- 15/16" glass insulated laminated
- High performance low-e coatings

Standard Finishes

- Bronze
- White
- Silver

Custom Finishes

- Kynar Finish
- Wood like finishes

Florida Product Approval LMI FA: FL # 26942

CAD Drawings available online at www.MrGlassWindows.com



sales@mrglasswindows.com • www.mrglasswindows.com

8120 NW 84th Street, Medley, FL 33166 • Ph: 305.470.8284 Fax: 305.470.8285



8051 NW 79TH STREET MIAMI, FL 33166

P: (305) 764-3963

Email: sales@mrglasswindows.com

www.mrglasswindows.com

MR. GLASS DOORS AND WINDOWS MANUFACTURING, LLC. LIMITED WARRANTY

IMPORTANT NOTICE: Read this entire Limited Warranty before purchasing or installing any Mr. Glass Doors and Window, Inc. ("MR. GLASS") product. By installing or using this product, you are acknowledging that this Limited Warranty is part of the terms of sale.

1. **Warranty** MR. GLASS products are warranted to be free from defects in manufacturing, materials and workmanship for the period of time specified below.
2. **Maintenance** Windows and doors must be washed with tap water at least once every six months; a service invoice must be provided as proof that cleaning procedure has been carried out in a timely manner, for warranty to apply. [OR: purchaser must strictly follow the Cleaning Procedures furnished by MR. GLASS for this limited warranty to apply.]
3. **Finish** This Warranty covers factory applied finishes or exposed aluminum surfaces against peeling, checking, cracking, chalking and change of color per applicable AAMA Specifications 2603, 2605 in force at the time of purchase. This limited warranty applies only when finish types recommended for the atmospheric environment of the project site are used. MR. GLASS reserves the right to re-finish defective components in the field, using air-dry products.
4. **Glass** This warranty covers glass purchased and factory glazed by MR. GLASS, under the following specifications:
 - Insulating glass is covered against seal failure
 - Laminated glass covered against de-lamination
 - Spandrel glass coating is covered against peeling, cracking or coating deterioration.
5. **Screens** Screens and screen frame components carry a limited one (1) year warranty against defective materials and workmanship, regardless of the length of the warranty on the remainder of the products.



8051 NW 79TH STREET MIAMI, FL 33166

P: (305) 764-3963

Email: sales@mrglasswindows.com

www.mrglasswindows.com

6. **No Consequential Damages** MR. GLASS shall not be liable for any and all special, indirect, and consequential damages resulting from or arising out of this Limited Warranty or the breach thereof including, without limitation, loss of profits, loss of contracts or business interruptions or punitive damages, however the same may be caused, regardless of whether attributable to (in whole or in part) the negligence, strict liability, statutory liability, products liability, tort, breach of Agreement, breach of duty (statutory or otherwise), the sole, joint or concurrent negligence, or any other fault or responsibility of MR. GLASS.

7. **WHAT THIS LIMITED WARRANTY DOES NOT COVER** MR. GLASS is not responsible for or makes no warranty as to: 1) Product failure, loss or damage due to:
 - Normal wear and tear from product usage or age, including normal wear and tear of weatherstrip.
 - Normal wear, fading or discoloration of finish from product usage, age or exposure to direct sunlight.
 - Improper storage, handling, installation, finishing, use, modification or maintenance.
 - Mechanical abrasion to finishes.
 - Non-factory-applied finishes, applied sealants or caulking. Finishes applied by your local dealer/contractor are not covered by this warranty.
 - Structural settlement, movement or vibration.
 - Warping less than 1/4 inch, which is deferred for twelve [12] months, as the product takes time to adjust to local humidity levels.
 - Products or finishes exposed to excessive localized heat, high-moisture environments (including pools, hot tubs and greenhouses) or water leakage.
 - Damage caused by failure to properly finish all door panel, sidelight, transom, molding, light rim and frame surfaces, and jambs within thirty [30] days of installation — including products stored in excess of thirty [30] days.
 - Damage caused by inappropriate finishes, solvents, brickwash or cleaning chemicals.
 - Acts of God.
 - Acid rain or other corrosive elements.
 - Salt spray, including exposure to coastal weather conditions.
 - Application of after-market window films to glass surfaces.
 - Accidents, including accidental glass breakage, not the fault of MR. GLASS, that results in seal failure.
 - Accidents; misuse; abuse; alterations; improper handling, operation or cleaning.
 - Pet damage of any kind.
 - Damage and/or discoloration, not the fault of MR. GLASS, to blinds or shades sealed between glass associated with wear and tear through product use, sun exposure, abuse or age.
 - Discoloration or fading caused by product's exposure to direct sunlight.
 - Damage to glass as a result of installation at elevations above 5,500 feet.
 - Damage caused by high in-home humidity (condensation, frost or mold).
 - Products subjected to conditions outside their design limitations.
 - Improperly installed security systems.
 - Products with modifications that are not approved by MR. GLASS
 - Hardware



8051 NW 79TH STREET MIAMI, FL 33166

P: (305) 764-3963

Email: sales@mrglasswindows.com

www.mrglasswindows.com

finishes, including decorative metal accent options (clavos, hinge straps, etc.) and wrought iron. • MR. GLASS doors, transoms and sidelights installed in non-MR. GLASS frames; the purchase, damage, repair or replacement of non-MR. GLASS products. • Finishing or modifying the structure containing repaired or replaced product. • Finish failure or any other losses arising from defects in the existing structure. • The purchase, damage, repair or replacement of non-MR. GLASS products. • Products that have not been paid for in full. • product failure due to improper usage, handling or storage, incompatibility between materials, improper building construction, excessive building movements • failure to provide routine, documented and reasonable maintenance and inspection • scratches or abrasions to the product • abnormal environment conditions • damage caused by water entry from sources outside MR. GLASS materials, fire or other casualty, physical damage, field fabrication, finishing or formed damages caused by any chemicals used on or around the product, government restrictions, acts of aggression, or acts of God. MR. GLASS will not be held liable for: any work performed or material supplied by others, architectural fees, consulting fees, back charges or remedial labor costs, without written pre-authorization by MR. GLASS. This warranty applies only if MR. GLASS is notified in writing within ninety (90) days after: a) discovery of defect (s), or b) the time at which defect (s) should have been discovered through reasonable diligence. Cleaning and final adjustments are not the responsibility of MR. GLASS and are not covered by this warranty. Improper layout, installation or maintenance voids this warranty.

8. **Mold and Mildew** This warranty does not cover and MR. GLASS will not be liable for any damages whether to property or person, caused by or attributable to mold, mildew, fungi or any other toxins, not directly attributable to a defect in the MR. GLASS product. Further, under no circumstances, regardless of cause, shall MR. GLASS be liable for damages attributable to: mold, mildew, fungi or any other toxins, whether to person or property, where such damage or environment was known or, through responsible and regular inspection could have been known, regardless of the origin cause of damage.
9. **Remedy** In the event that MR. GLASS products or components are found to be defective, MR. GLASS will repair or provide replacements, at our option, without charge. The warranty of the repaired or replaced windows and doors or components will be limited to the remainder of the original warranty period. MR. GLASS reserves the right to reasonable field access to diagnose



8051 NW 79TH STREET MIAMI, FL 33166

P: (305) 764-3963

Email: sales@mrglasswindows.com

www.mrglasswindows.com

and repair any product alleged to be defective; and to substitute similar replacement components for those no longer available. For the purpose of this warranty, field activities are any that do not occur within the MR. GLASS factory. No employee, representative, agent or distributor of MR. GLASS, other than the president, is authorized to modify this limited warranty. IN NO EVENT WILL MR. GLASS AGGREGATE LIABILITY, UNDER THIS WARRANTY, EXCEED THE ORIGINAL PURCHASER'S PAYMENT TO MR. GLASS. This warranty is provided in lieu of any other warranty requirements or obligations, including those of Project Specifications or General Conditions of Contract Documents.

10. **Invalidity** In the event that any provision of this Warranty is determined to be invalid, illegal or otherwise unenforceable for any reason, such determination shall not affect the validity or enforceability of any remaining provisions.
11. **Documentation** MR. GLASS reserves the right to deem the Warranty invalid if not accompanied by a bill of sale or documentation, which constitutes a legal agreement between the client and MR. GLASS.
12. **Term of Warranty.** Length of warranty is determined specifically for each project and is noted below.
13. **No Other Warranties or Representations** THIS LIMITED WARRANTY IS IN LIEU OF ALL OTHER WARRANTIES, EXPRESS OR IMPLIED, INCLUDING, BUT NOT LIMITED TO, ANY IMPLIED WARRANTIES OF MERCHANTABILITY OR FITNESS FOR A PARTICULAR PURPOSE. ALL WARRANTIES ARE LIMITED TO THE APPLICABLE STATUTE OF LIMITATIONS BUT IN NO CASE WILL EXTEND BEYOND THE LIMITED WARRANTY PERIODS SPECIFIED ABOVE. ANDERSEN EXCLUDES AND WILL NOT BE LIABLE FOR ANY INCIDENTAL OR CONSEQUENTIAL DAMAGES, WHETHER ARISING OUT OF CONTRACT, TORT OR OTHERWISE. THE REMEDY OF REPAIR, REPLACEMENT OR REFUND OF THE ACTUAL PURCHASE PRICE OF THE PRODUCT PROVIDED BY THIS LIMITED WARRANTY IS THE EXCLUSIVE REMEDY WITH RESPECT TO ANY AND ALL LOSS OR DAMAGE.
14. **Applicable Law** This Limited Warranty is only applicable in the U.S.A. (i.e. the fifty states and the District of Columbia). This Limited Warranty gives you specific legal rights, and you may also have other rights which may vary from state to state. Some states do not allow the exclusion or limitation of incidental or consequential damages or limitation of the duration of an



8051 NW 79TH STREET MIAMI, FL 33166

P: (305) 764-3963

Email: sales@mrglasswindows.com

www.mrglasswindows.com

implied warranty, so the above limitations or exclusions may not apply to you. If any specific term of this Limited Warranty is prohibited by any applicable law, it shall be null and void, but the remainder of this Limited Warranty shall remain in full force and effect. Venue for any action brought to enforce or interpret the terms of this Agreement shall be exclusively in the courts of Miami-Dade County, Florida.

15. **Waiver of Jury Trial.** BOTH PURCHASER AND MR. GLASS HEREBY KNOWINGLY, VOLUNTARILY, AND INTENTIONALLY WAIVES (TO THE FULLEST EXTENT PERMITTED BY APPLICABLE LAW) ANY RIGHT IT MAY HAVE TO A TRIAL BY JURY OF ANY DISPUTE DIRECTLY OR INDIRECTLY ARISING UNDER OR RELATING TO THIS LIMITED WARRANTY AND AGREE THAT ANY SUCH DISPUTE SHALL BE TRIED BEFORE A JUDGE SITTING WITHOUT A JURY.

16. **Transferability** In non-residential applications, this warranty may be extended directly to the owner and passed on to subsequent owners through its term. In residential applications, this warranty applies only to the original purchaser and is not assignable or transferable. This warranty covers only products and components supplied by MR. GLASS. Waiver by MR. GLASS of any terms, or any breach of any of the terms, of this Limited Warranty for any project shall not be construed as a waiver of any other breach of that of any other project.

Project Name and Number:

Effective Date: _____

MR. GLASS By:

Name: _____

Title: _____

Date Signed: _____

Warranty Period(s): Window parts and components other than Aluminum and Glass



8051 NW 79TH STREET MIAMI, FL 33166

P: (305) 764-3963

Email: sales@mrglasswindows.com

www.mrglasswindows.com

- Powder Coating Finish (3 years)

- Clear Anodized Finish (3 years – non coast zone)

- Kynar Finish (10 Years)

- Laminated with PVB Glass (5 years)

- Laminated with SGP Glass (10 years)

- Insulated Laminated Glass (5 years)

- Hardware (3 years)

Exclusion: The warranty for Sloped Glazing is 5 years as an Industry Standard; there is a higher risk of moisture penetration when using laminated glass.



8051 NW 79TH STREET MIAMI, FL 33166

P: (305) 764-3963

Email: sales@mrglasswindows.com

www.mrglasswindows.com

Film Characteristics and Properties of Our Paint

Film Characteristics	AMMA # 2603	AMMA # 2605
Weathering Period (45 South Florida)	1 year	
Allowable Color	Slight	< 5 delta E hunter units per ASTM D 2244 Section 6.3
Chalking	Not specified	<#8 for colors, #6 for whites per ASTM D4214
Glass Retention	Not specified	
Hardness (Pencil)	2H-4H	F Minimum per ASTM D 3363
Dry Film Thickness (MIN)	0.8 MIL	25-30 microns per ASTM D 1400 May vary slightly per color
Salt Spray Resistance	1500 Hours Exposure	<7 creepage on scribe/cut edge < #8 blisters on face per ASTM B 117
Humidity Resistance	1500 Hours Exposure	< #8 blisters on face after 4000 hours @ 38 degrees C per ASTM D
Abrasion Resistance	Not Specified	> 40 liters falling sand per ASTM D968
Chemical Resistance	Not Specified	-No blisters or color change after 15 minutes exposure 10% muriatic acid -Mortar resistance (per ASTM C 207): Removes easily after 24 hours on painted surface. Residue can be wiped off easily with 10% muriatic acid. Some slight discoloration may occur depending on color; consult PPG. -Nitric acid: No color change after 30 min exposure to 70% ACS reagent grade followed by tap water rinse & one hour recovery. -Detergent resistance: No blistering or adhesion loss after
Solvent Resistance	Not Specified	50 double rubs minimum with MEK and Cheese cloth.
PVDF Content	30%	70% of resin backbone
Warranty	3 year film integrity	5 years (subject to certain terms)



8051 NW 79TH STREET MIAMI, FL 33166

P: (305) 764-3963

Email: sales@mrglasswindows.com

www.mrglasswindows.com